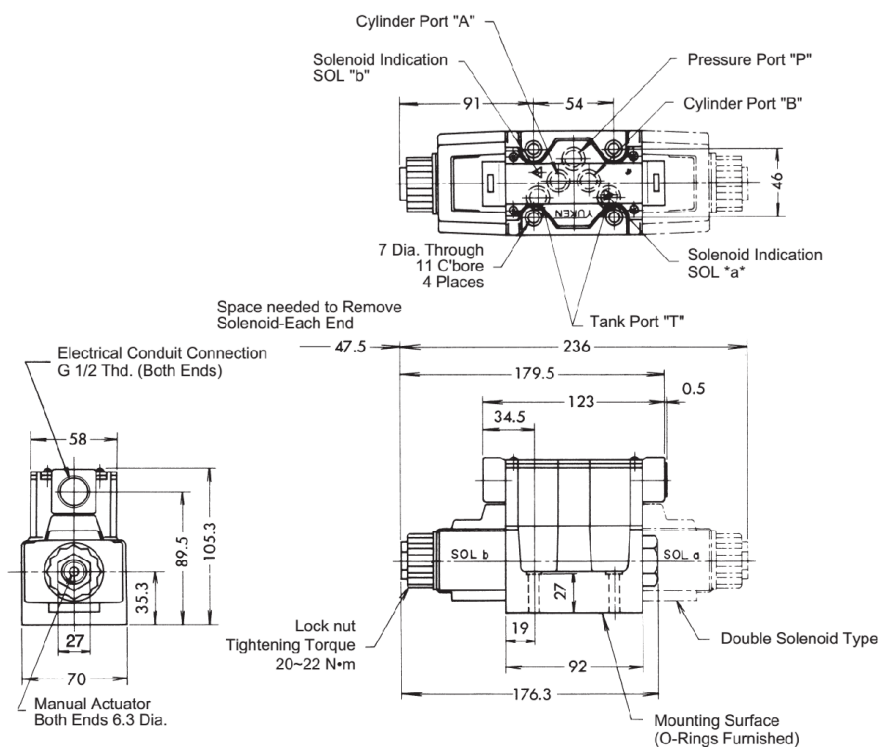


## Solenoid Operated Directional Valves Max. Pressure 31.5 MPa

Model with AC solenoids : DSG-03-※※※-A※

- Spring Centered
- No Spring Detented
- Spring Offset

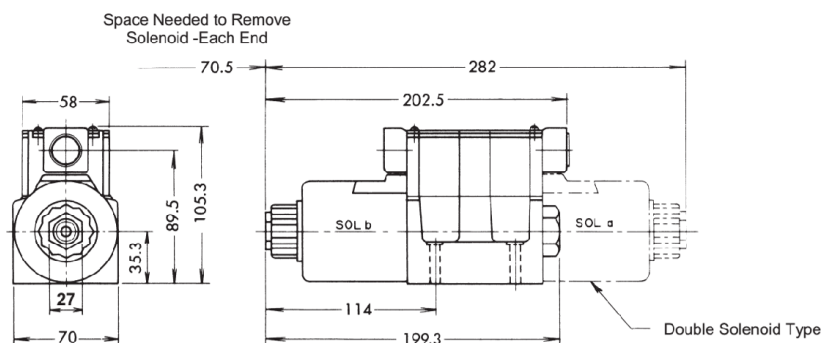
Mounting Surface:ISO 4401-AC-05-4-A-80



Model with DC solenoids : DSG-03-※※※-D※

Mounting Surface:ISO 4401-AC-85-04-A-80

Model with R solenoids : DSG-03-※※※-R※



• For other dimensions, please refer to the above model with AC solenoids.

Note: For dimensions of mounting surface, please refer to DSGM-03 type sub-plate on page 91.